

Manufacturing Management Solutions

Know where your orders are...

Without a smoothly running work order status system, problems can arise in inventory control and production can be interrupted by unexpected shortages.

The Work Order Status (WOS) system can prevent these and similar problems. Not only does WOS streamline work order related procedures, it also improves inventory control and generates timely information. It's a key component that facilitates a highly interactive closed-loop manufacturing system.

MMS Work Order Status

Production tracking is essential

The WOS system creates new work orders, releases the work orders, issues materials to work orders using the Pick List (a single level explosion extended by quantities on the work order), receives completed work orders into inventory, and closes work orders. In addition, it maintains a database which allows the user to know 1)when a work order is scheduled to be released and/or 2)when a work order is scheduled for completion. The WOS system also keeps track of the number of assemblies needed by the work order and amount of material required by the assemblies.

Feed Back Points are supported to track the approximate location of each work order in the plant. A more extensive tracking system is offered through the Advanced Work Order System.

The Work Order System will:

- Improve inventory levels and control
- Reduce raw goods inventory by the proper amounts
- Track Work in Progress
- Interface with other MMS modules.
- Update finished goods as required.



Work Order Status Key Features

Key Features:

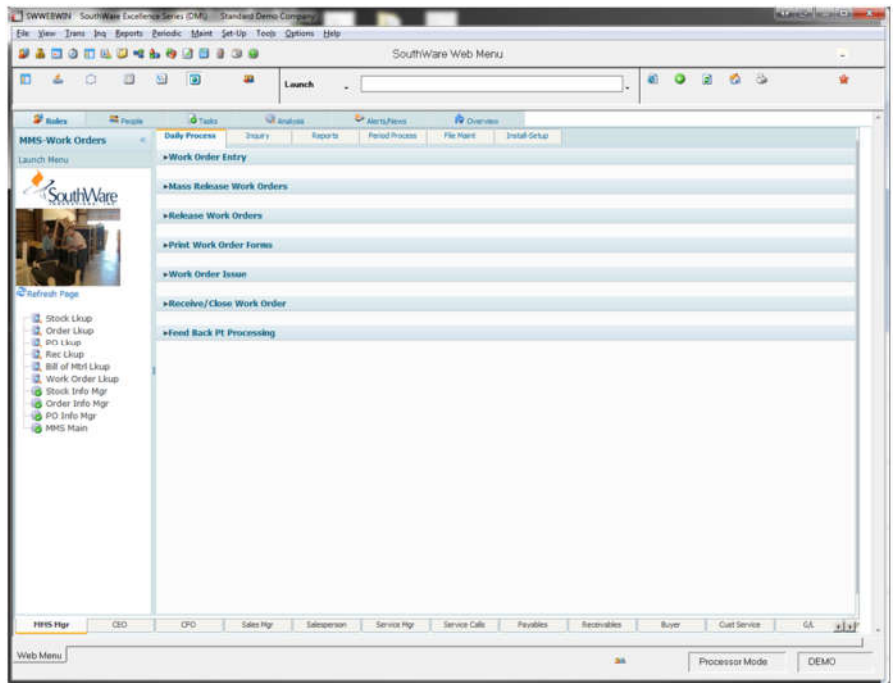
- Automatically create Work orders from Scheduling.
- Track Feed Back Points.
- Issue materials as needed.
- Updates Work in Progress.
- Updates component and finished goods inventory.

Reporting Features:

- Work Order Status
- Pick List Issues
- Work Orders to be released
- Shortage reports.
- Closed jobs reports.
- In process reports.
- Work Order transactions.

Standard Features:

- Seamless integration into Southware Standards
- Reportmate capabilities
- Extended Data capabilities
- Standard Assemblies as a base product.



The Work Order Status System provides you with:

- ✓ **Up-to-date information on the progress of your orders going through your plant**
- ✓ **A Work in Progress inventory**
- ✓ **The information to better plan for increases in work loads**
- ✓ **The system takes information from scheduling to streamline data entry**
- ✓ **Automatically updated inventory levels**
- ✓ **Production shortage information**
- ✓ **A major component in the Closed Loop Manufacturing process**
- ✓ **Information on the number of assemblies needed to fulfill a requirement.**



This product is sold exclusively through BTM Solutions or one of its authorized dealers.

572 Yorkville Road East Columbus, MS 39702
4858fx

(662)328-2400 (662)328-

www.btmsolutions.com