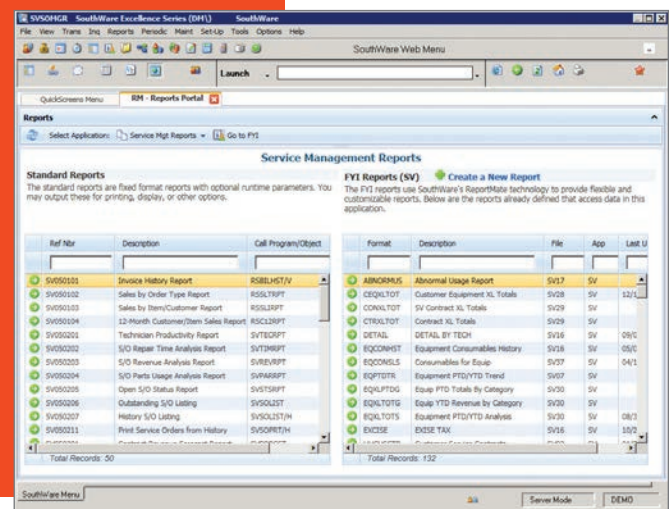


Unlimited Reporting Tools

The value of the data in your business system is directly related to your ability to access it. Your standard reporting needs are well addressed with reports provided within SouthWare, but what about those special reports for your unique needs?

Benefits

- Create a report that shows information the way it is most helpful
- Combine information from several files on one report
- Know which files can be combined with any particular file
- Perform calculations on data
- Show special reporting statistics such as record counts, averages, and running totals
- Select the records to appear on a report using flexible criteria
- Create special files from business data for use with spreadsheets, word processors, and other software products
- Create a table view for spreadsheet-like review or editing (Windows only)
- Display customized reports on the menu to give them the same appearance as the standard system reports
- Limit data availability of sensitive reports to authorized persons



With SouthWare's ReportMate you've got the answer to your custom reporting needs. You can access the data in any major file in your SouthWare system and produce a report or a reporting file. It's very simple to use so you don't have to be a programmer - you'll be creating reports in minutes, and you can lay out the data on the report the way you want to see it!

Reports browser portal gives you the ability to quickly find and access hundreds of standard and custom reports.

FEATURES & FUNCTIONALITY

PRE-DEFINED DATA DICTIONARY

- Files/fields are easy to find and reference
- Relationships between files are already setup - the hard part is done for you

RANGE OF RECORDS OPTIONS

- Up to 5 selection ranges per report
- Each range may be defined at runtime

SORT SEQUENCE OPTIONS

- Up to 5 sort sequences per report
- Ascending or descending
- Subtotal and page break options
- Define which fields print at subtotal break

OTHER SELECTION CRITERIA OPTIONS

- Up to 5 special selection criteria per record
- Up to 5 selection criteria per field
- Test a field to be less than, greater than, equal to, not equal to, greater than or equal to, less than or equal to, or match on masking characters
- Record tests may be required or optional and changed at runtime

OUTPUT OPTIONS

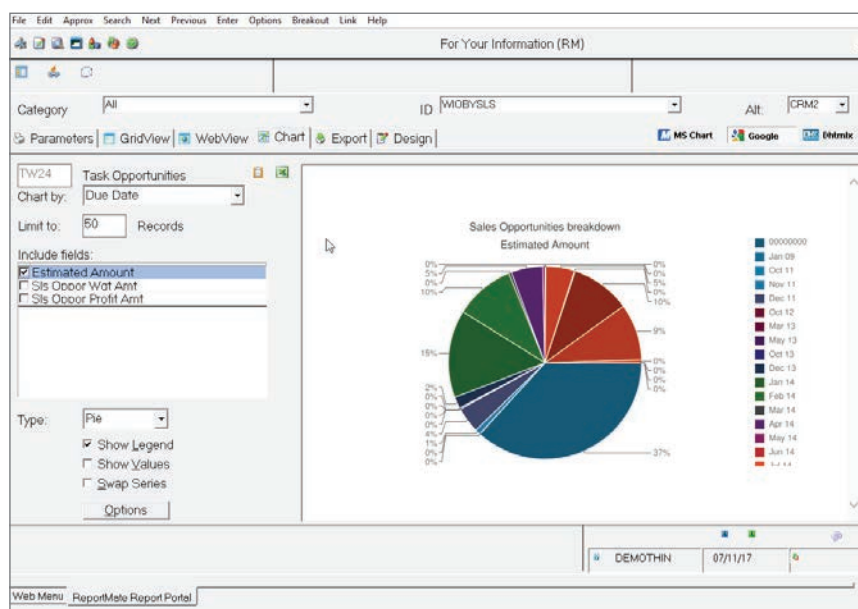
- As a report to printer, screen, or file
- As HTML file or table to a browser
- As a DIF, delimited, or merge file
- As XML data
- As fixed-position or fixed-length text
- As a file to use with ImportMate
- As ExecuMate statistics

TABLE VIEW SUBSYSTEM (WINDOWS ONLY)

- Turn a report into a spreadsheet-like grid
- Option to edit data
- Defining a report layout
- “WYSIWYG” entry enables viewable/editable report
- Up to 264 columns per line
- Up to 10 lines per record
- Heading and spacing controls
- Default column headers (up to 5 lines)
- Easy lookup of files and fields
- Allows runtime options for dates and other constants used in calculations
- Field wizard for instant reports

SPECIAL FEATURES

- Specify variable time periods for reporting from period history
- Special comment lines provide instructions to anyone running a report
- Totals only option
- Option to add ReportMate reports to menu



Sample Display of Google Chart