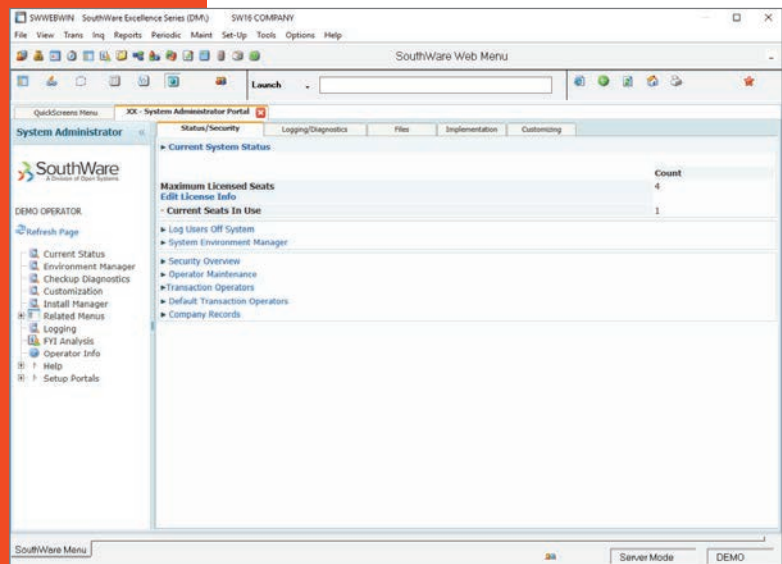


Excellence Series Tools

SwiftMate is the system environment for SouthWare that can be custom-fitted to the tasks your people perform. And your entire system is made more valuable through the special security, communication, and other company-wide functions provided by SwiftMate.

Benefits

- Get the system up and running quickly and smoothly
- Control which functions each operator may access and use
- Utilize role-specific webpage menus for each user
- Monitor who's using the system and what they are doing
- Switch between multiple open programs with continuously available tabs
- See instant on-screen help explanations about functions and control the amount of help given per operator
- Interrupt any task to do another function, then return to the original task
- Have a common menu environment for all software, even non-SouthWare products
- Configure the system to match the terminals, printers, and other computer hardware currently used
- Customize the user interface with SouthWare style options, including variable graphical menus, pull-down menus, and button bars
- "Program" new features into SouthWare products with objects, remote control field packets, and field filters
- Create zoom views to provide unique summaries of data with "road maps" to further information



System Administrator Portal

FEATURES & FUNCTIONALITY

INSTALLATION FEATURES

- Automated product installation
- Define terminal features per user - functions keys, colors, compress display, pass-thru printing, cash drawers, fax interfaces, phone dialers, etc.
- Unlimited printer configurations

SECURITY FEATURES

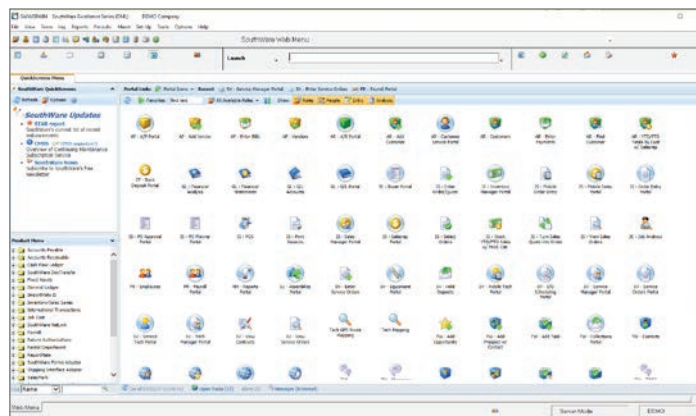
- Security level per operator per product
- Option to add selective customized security
- Menus adjust to match operator security
- Optional logging of selected system activity
- Secure certain features such as access to operating system and direct program calls
- Each set of files (company) has its own security and file subdirectory
- Ability to monitor specific program and file activity - such as adding, deleting or modifying a record

OPERATOR CONVENIENCE FEATURES

- Multi-level personal breakout to interrupt any task, access other programs, then resume your original task
- Style options (including graphical features)
- RapidKeys and variable button bars.
- User-defined links between programs
- LearnFromYou™ - monitors entered data to help streamline use of system

MENU FEATURES

- Standard or user-defined shortcuts
- User-definable graphical menus
- Processing menus serve as checklists
- Optional customizable pull-down menus
- Add non-SouthWare products to menu
- User-maintainable menu appearance
- Multiple menu styles
- Independent task windows (Windows only)



QuickScreens Web Menu

HELP-RELATED FEATURES

- Customizable help for menus and fields
- Automatic or manual help display
- Results index, Q/A database, extended help and hints for further explanation

OTHER SPECIAL FEATURES

- StopCheck for automatic system checking and status reporting
- Print manager program for spooled reports
- Send mail between operators or over Internet
- Message feature for broadcasting to users
- Objects, field-level objects, and filters
- Numerous special-purpose utility programs

SWIFTMATE MAKES YOUR ENTIRE SYSTEM MORE VALUABLE

- Multi-user capability is built-in, not just added on
- Security scheme can be as simple or as complex as needed
- All products are integrated into one menu
- Choose from various user style options, including graphical and non-graphical features
- Portable system that runs on hundreds of computers of all sizes
- Customize the system with views, objects, and field-level objects
- Customize the help and question/answer database
- Monitor who's using the system and what they are doing